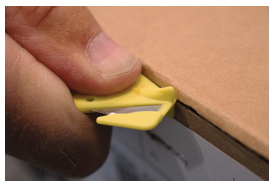
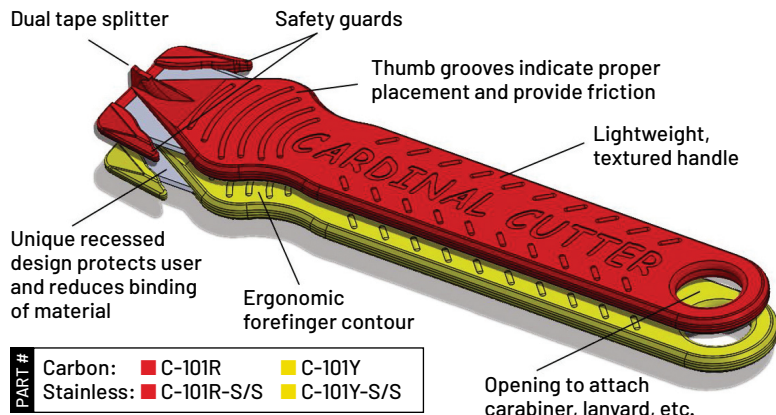


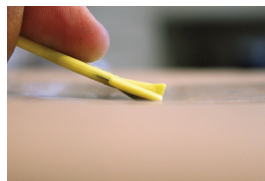
A Cut Above The Rest

Cardinal® Cutter: The Original

Made of recyclable plastic, this lightweight and efficient tool comes with your choice of carbon or stainless steel blades. The proper blade angle extends the life and performance of the blades, while dual safety guards and concealed blades make it practically impossible to injure yourself or others – earning all Cardinal Cutters a high level of safety.



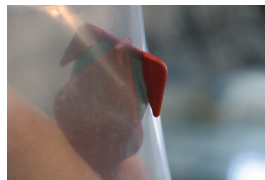
The Cardinal Cutter's unique, recessed blade design offers precise cutting for a variety of materials, including cardboard.



The dual tape splitter cuts through packing tape with ease, maintaining blade integrity – even with sturdier material.



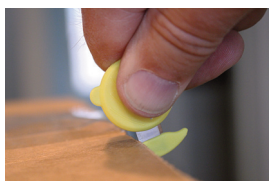
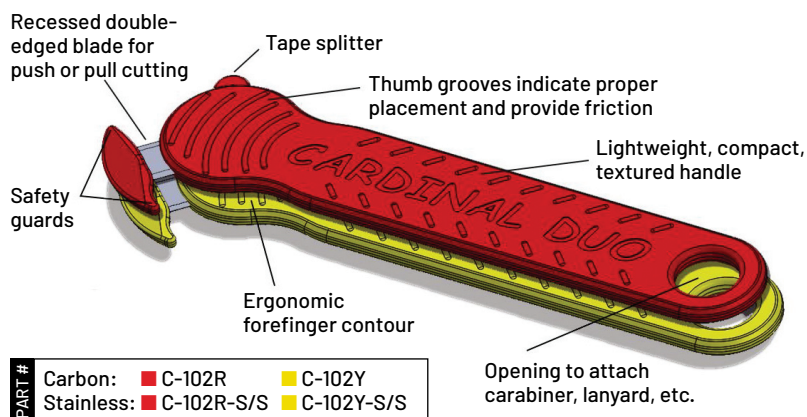
Dual safety guards protect the blades, package contents, and the user to ensure safe cutting in any application.



Efficient blade angle reduces binding and makes cutting through any material effortless.

Cardinal® Duo: Push & Pull

The Cardinal Duo features a protected double blade for push and pull cutting capabilities. Slim and lightweight, the Cardinal Duo fits easily in your pocket or attaches to a lanyard or keyring. Its comfortable handle is easy to grip with your thumb and forefinger for simple, stress-free cutting.



The Cardinal Duo's unique, recessed blade design offers precise cutting for a variety of materials, including cardboard.



The dual tape splitter cuts through packing tape with ease, maintaining blade integrity – even with sturdier material.



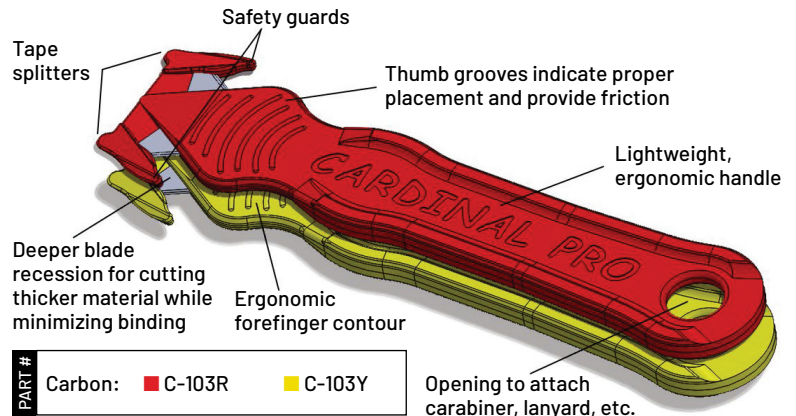
Dual safety guards protect the blades, package contents, and the user to ensure safe cutting in any application.



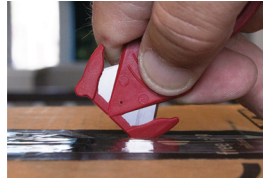
Efficient blade angle reduces binding and makes cutting through any material effortless.

Cardinal® Pro: Heavier Duty

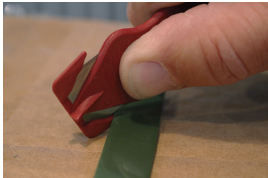
The Cardinal Pro is ideal for the heavier duty applications that require precision and speed in a safety cutter. This smart and effective tool packs a lot of cutting power in an ergonomic package, and is fully recyclable. Angled blades reduce the potential for binding, and the lightweight, ergonomic handle is designed for comfort and productivity.



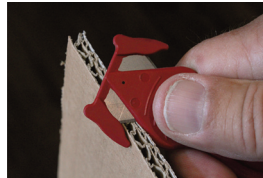
The Cardinal Pro's deeper recessed blades make it ideal for tougher materials, but it's also well-suited to any application, from single-walled cardboard to sheets of plastic.



The Cardinal Pro features dual tape splitters for cutting through packing tape and material that maintain their integrity, even through tougher materials.



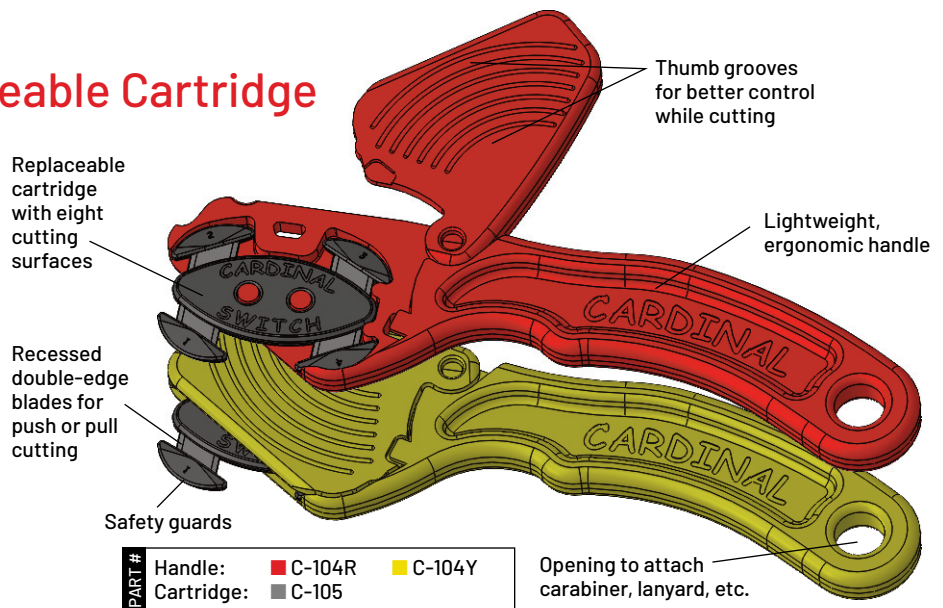
Cutting through thick plastic banding is made easy with the Cardinal Pro's proper blade angle. Cut at a 45 degree angle for maximum efficiency.



The Cardinal Pro's efficient blade angle reduces the chance for binding to virtually nothing – for cleaner and more precise cutting power.

Cardinal® Switch: Replaceable Cartridge

The Cardinal Switch offers replaceable cartridges, each with eight cutting surfaces (four push and four pull). Each cartridge has numbered blades (1 thru 4) to identify which blades have been used. Reduce cost and waste by keeping the handle and only replacing the cartridge. The ergonomic handle is designed to improve productivity by reducing hand fatigue.



Cardinal Recycling Program: Committed to limiting the use of natural resources, preventing pollution, and saving energy, which is why we designed all Cardinal products to be completely recyclable. Simply apply the included return label and we'll take care of the rest.



CARDINAL SAFETY CO.
A Cut Above The Rest

16110 Coventry Lane, Spring Lake, MI 49456

Email: Info@cardinalsafetyco.com

Office: (616) 935-7208

Fax: (616) 935-7008



Visit our
web site at
www.cardinalsafetyco.com